

QS World University Rankings

2022 Emerging Europe and
Central Asia (EECA) Rankings
Launch

The QS logo is located in the bottom left corner of the slide. It consists of the letters 'QS' in a white, bold, sans-serif font, set against a solid orange square background. The orange square is positioned within a white rectangular frame that has a slightly irregular, hand-drawn appearance.

QS

Meet the Presenters

Leigh Kamolins

Director of Analytics and Evaluation,
QS Quacquarelli Symonds



Dmytro Filchenko

Lead Rankings Analyst,
QS Quacquarelli Symonds



Introducing QS

The world's leading provider of insights, analytics and services to the global higher education sector



“Empowering motivated people around the world to fulfil their potential by fostering international mobility, educational achievement and career development”

- Our mission

QS EECA Rankings in numbers

In the 8th edition, we published **450** institutions (+12.5% to the previous edition), having **60** new entrants

Institutions in the EECA region

3,300+

EECA institutions indexed by QS

1,000+

EECA institutions nominated in QS Academic Reputation Survey

850+

EECA institutions evaluated as eligible

750+

EECA institutions analyzed in this year's rankings

550+

QS EECA Rankings: methodology

Environment / Resources

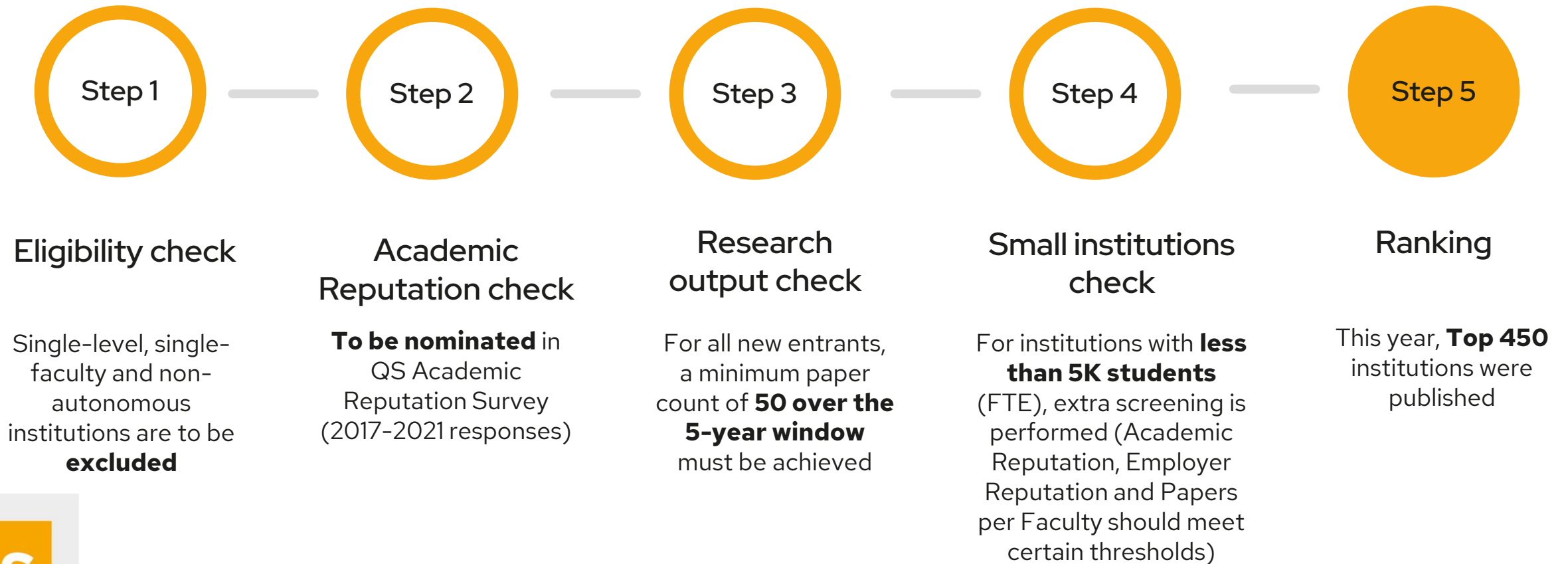
- Faculty Student Ratio (10%)
- Staff with PhD (5%)
- International Faculty (2.5%)
- International Student (2.5%)



Outcomes / Results

- Academic reputation (30%)
- Employer reputation (20%)
- International Research Network (10%)
- Papers per Faculty (10%)
- Citations per Paper (5%)
- Web Impact (5%)

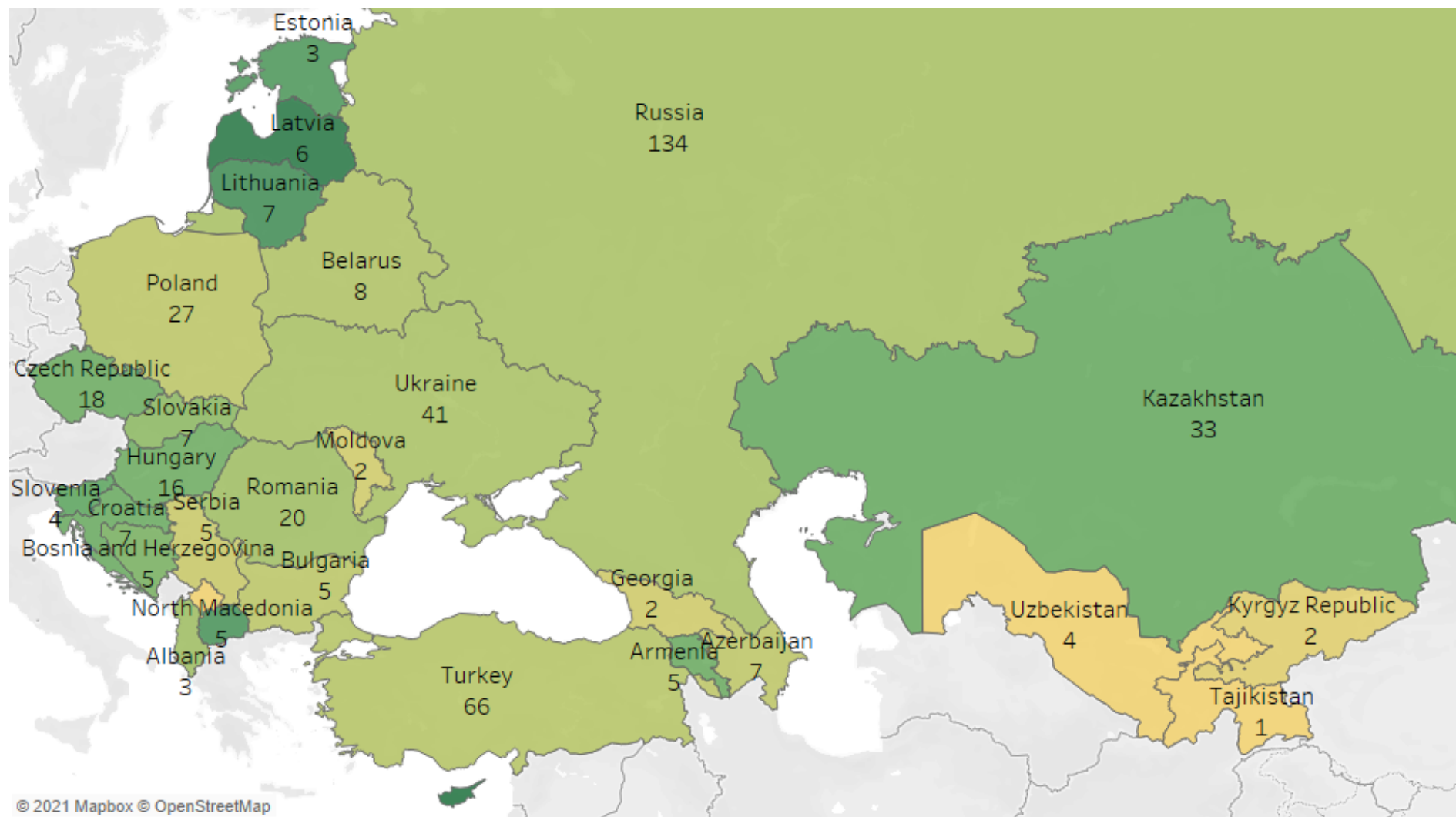
QS EECA Rankings: evaluation process



QS EECA 2022: ranked institutions, total and per capita

New entrants,
by country

| Country | Count |
|------------|-------|
| Russia | 16 |
| Ukraine | 16 |
| Turkey | 12 |
| Kazakhstan | 6 |
| Belarus | 3 |
| Poland | 2 |
| Romania | 2 |
| Croatia | 1 |
| Serbia | 1 |



© 2021 Mapbox © OpenStreetMap

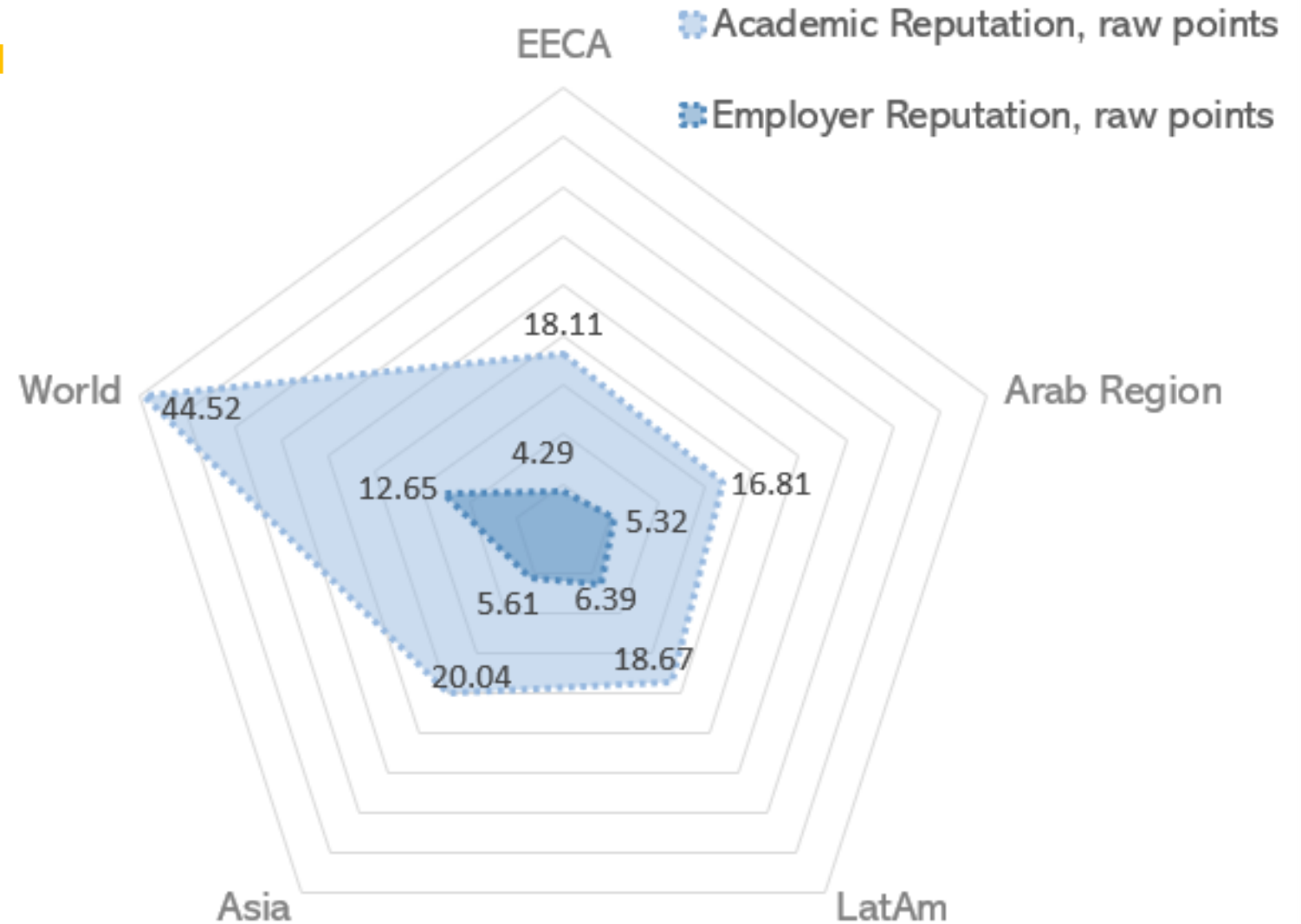
Ranked institutions per mln population



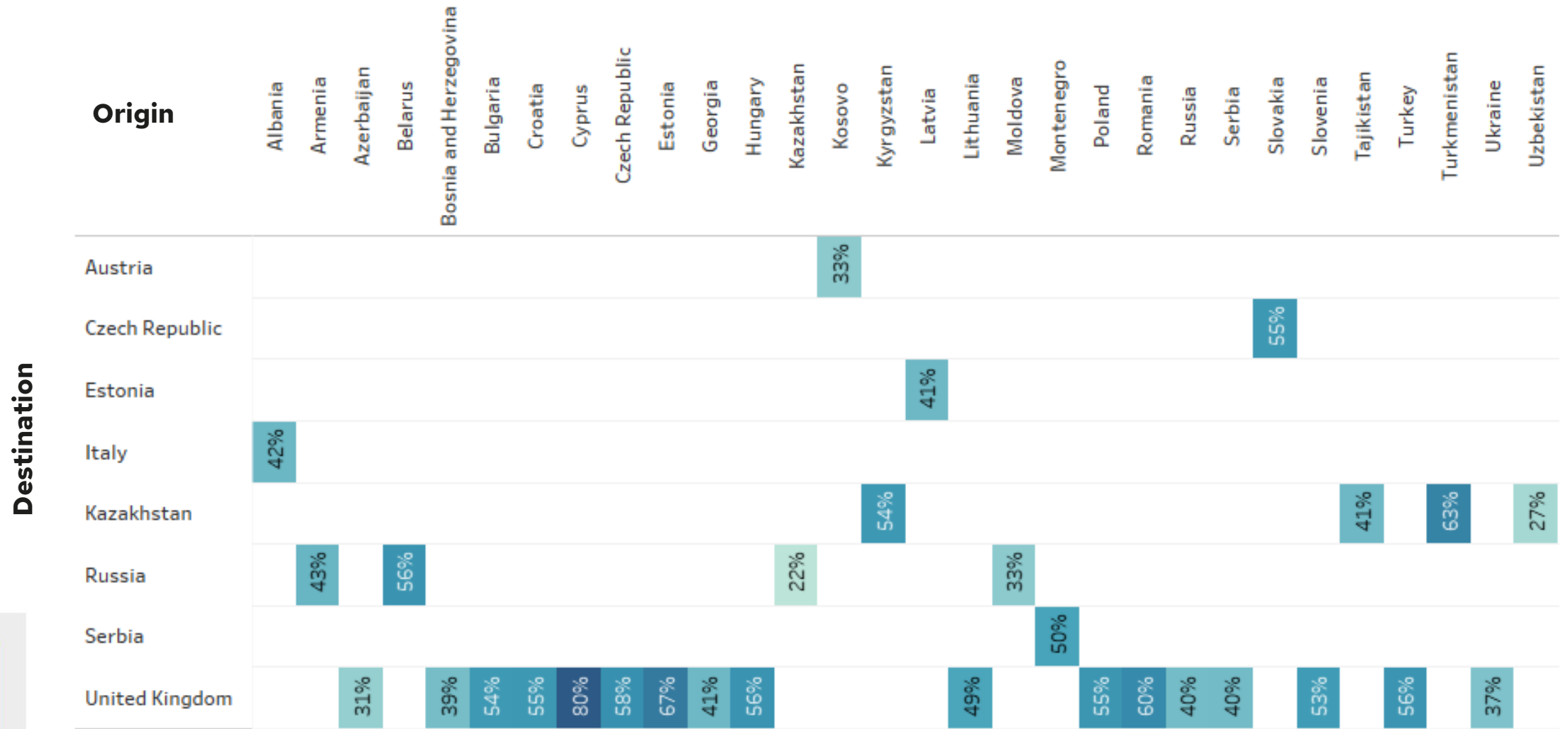
In-depth analysis

EECA Region: Reputation

- Responses received in **2017-2021** years are considered in this year's edition
- **Academic responses are adjusted** against respondent's country, region and faculty area knowledge, as well as year of response
- **Employer responses are adjusted** against employer's country, region and industry knowledge, as well as year of response

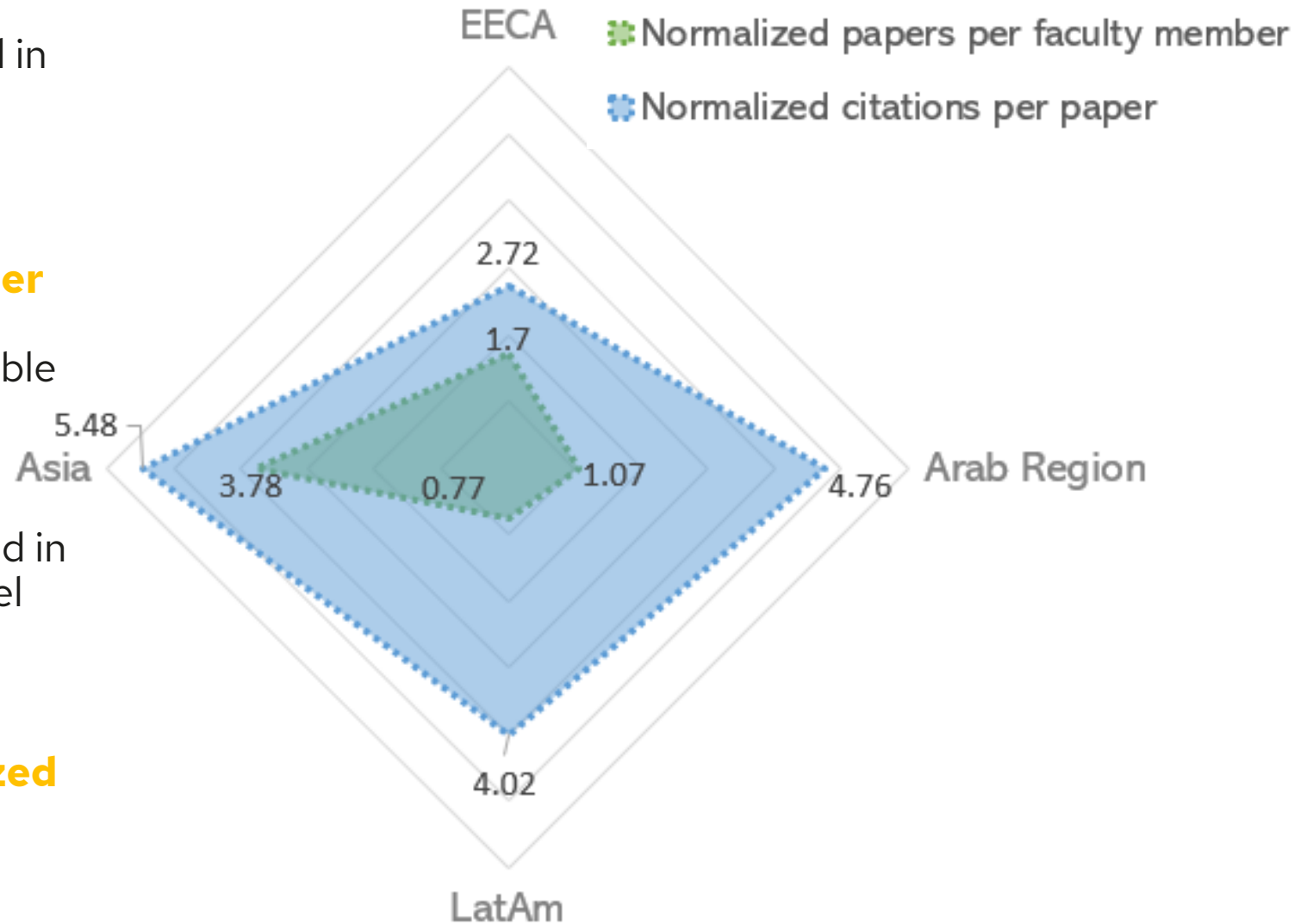


EECA Region: Top destinations of outgoing academic nominations



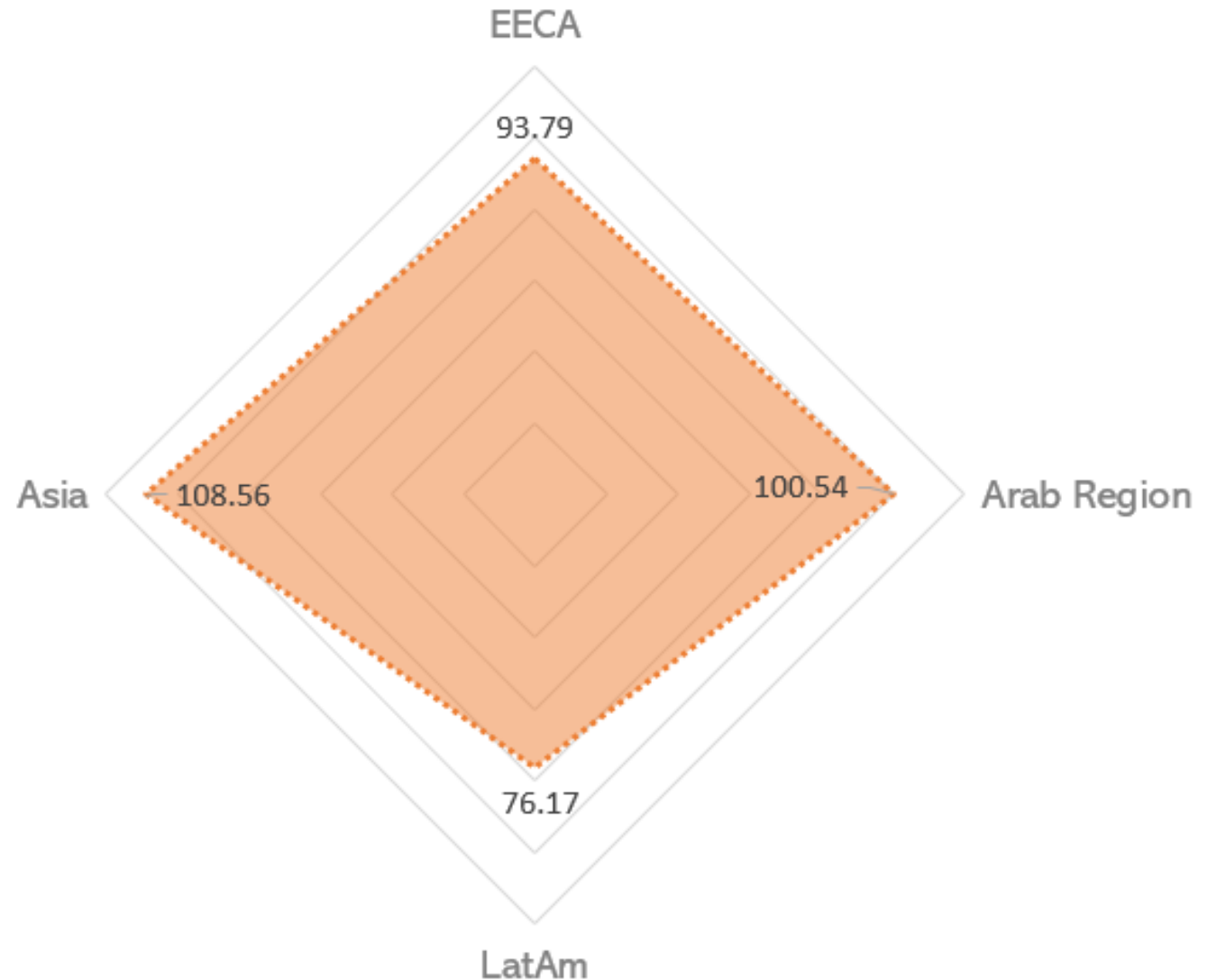
EECA Region: Papers and Citations

- We analyzed **papers** published in **2015-2019** and indexed by Elsevier's Scopus
- We analyzed only relevant **paper types** with the **number of affiliations** below a cap (variable per QS subject area)
- We analyzed **citations** received in **2015-2020**, where author-level **self-citations excluded**
- Papers and citations **normalized** by 5 faculty areas



EECA Region: International Research Network (IRN)

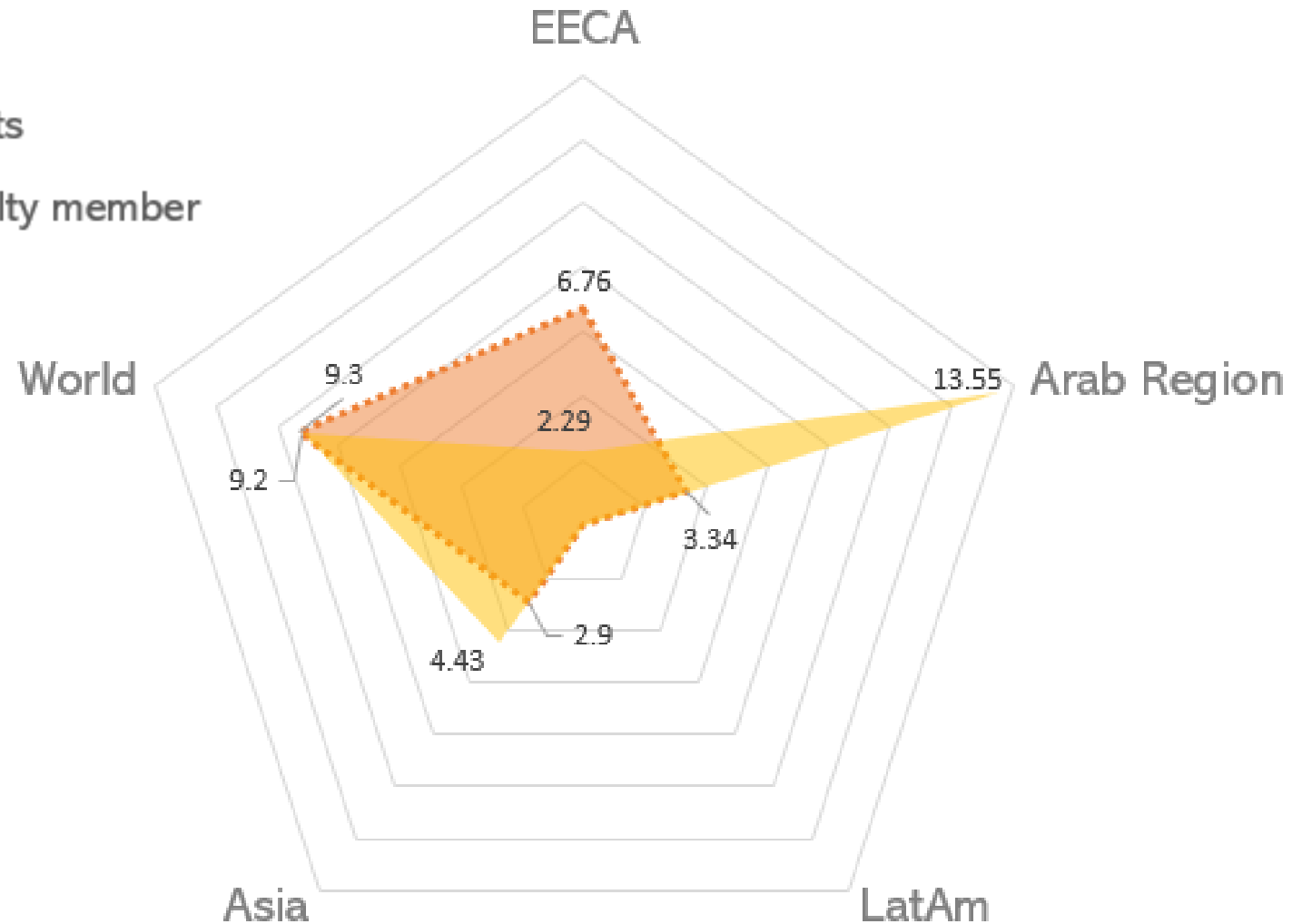
- As in other indicators, we analyzed **papers** published in **2015-2019** and indexed by Elsevier's Scopus
- We analyzed partnerships with other HEIs resulting in **3 or more joint papers**
- **Diversity in international locations** is prioritized over the diversity of partners
- Final index is **normalized** by 5 faculty areas



EECA Region: International Students and Faculty

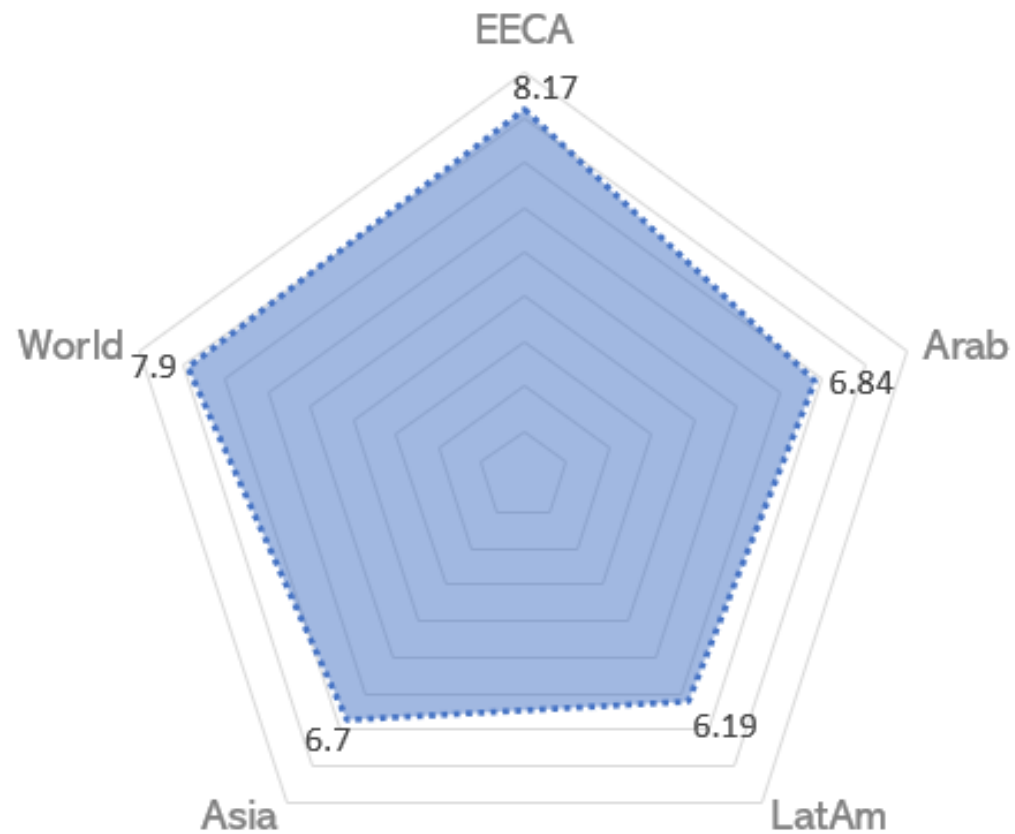
🌐 International students per 100 students

👤 International faculty staff per 100 faculty member

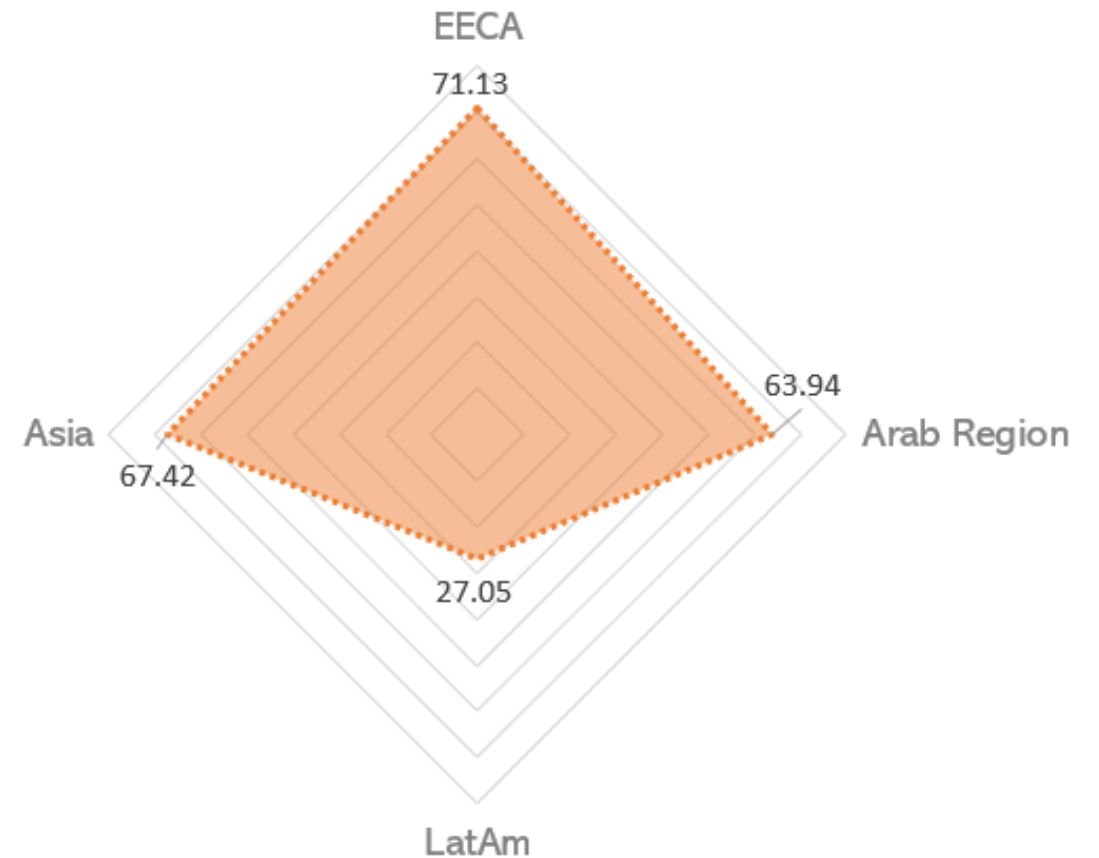


EECA Region: Faculty Staff

Faculty staff per 100 students

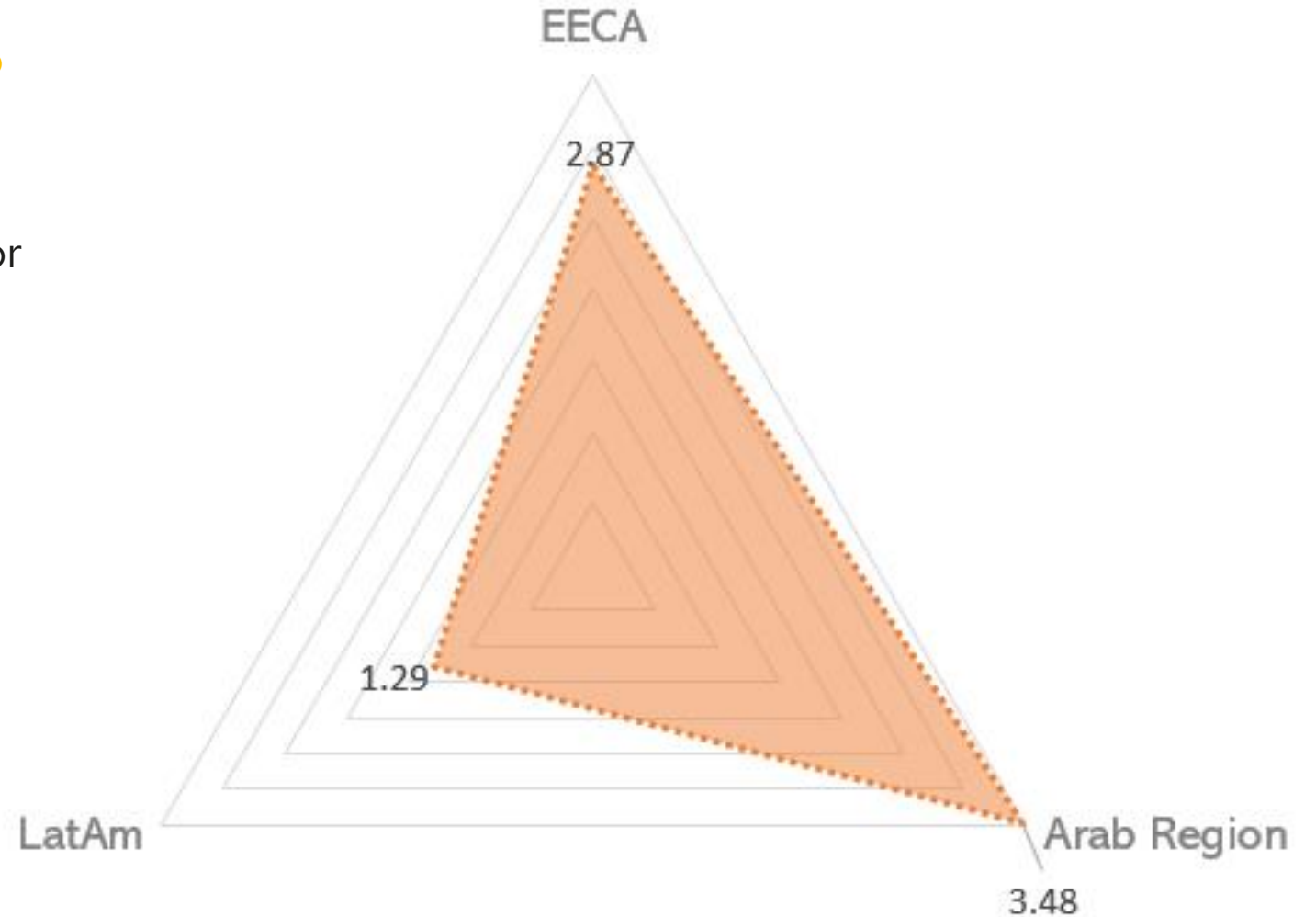
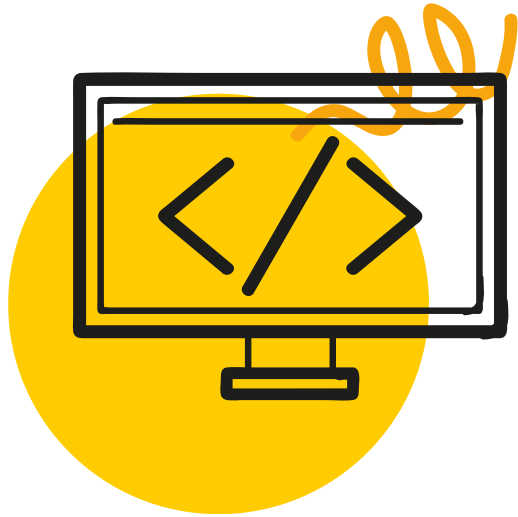


Faculty staff with a PhD degree per 100 faculty members








EECA Region: Web Impact

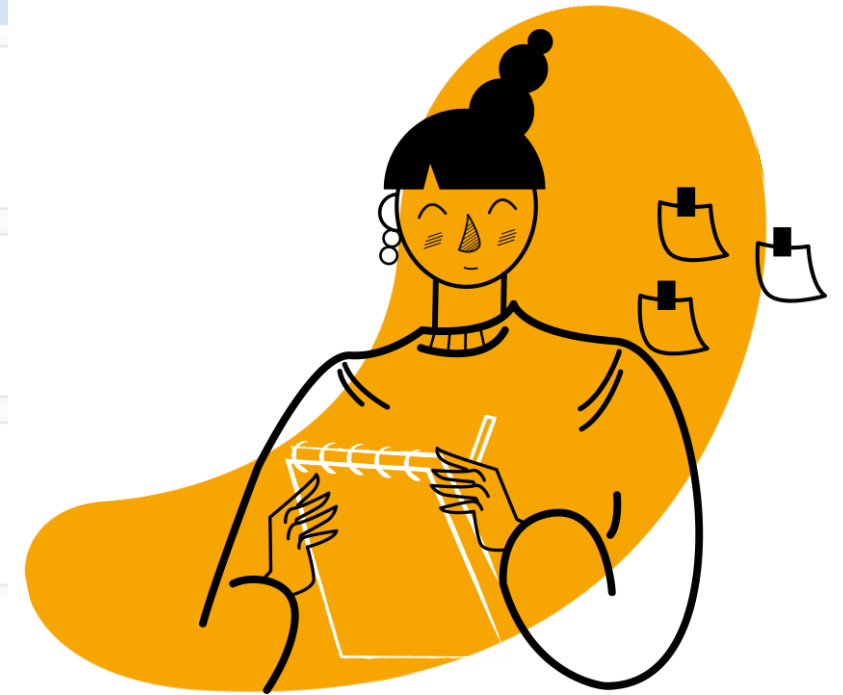
- Data source: **Webometrics.info** (July 2021 edition)
- Webometrics Excellence Indicator is **excluded** from our analysis








Rankings results

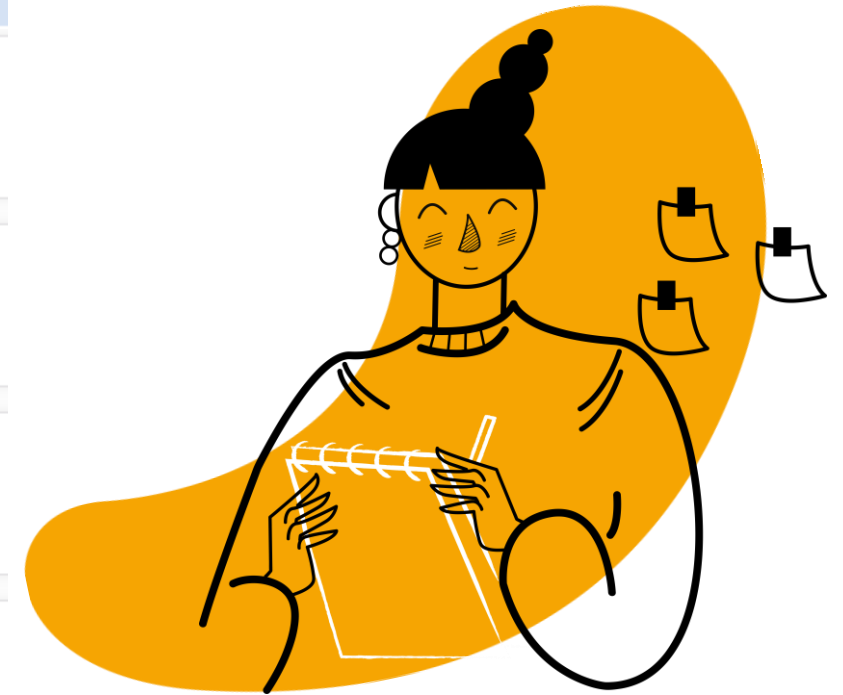
QS EECA Rankings 2022: Top 10 (1)

| ↑ Rank | ↓ University | ↓ Overall Score |
|--------|--|-----------------|
| 1 |  Lomonosov Moscow State University 📍 Moscow, Russia | 100 |
| 2 |  Charles University 📍 Prague, Czech Republic | 93.9 |
| 3 |  Saint Petersburg State University 📍 Saint Petersburg, Russia | 93.6 |
| 4 |  University of Tartu 📍 Tartu, Estonia | 91.9 |
| 5 |  Jagiellonian University 📍 Krakow, Poland | 91.8 |



QS EECA Rankings 2022: Top 10 (2)

| ↑ Rank | ↓ University | ↓ Overall Score |
|--------|---|-----------------|
| 6 |  University of Warsaw 📍 Warsaw, Poland | 89.7 |
| 7 |  Masaryk University 📍 Brno, Czech Republic | 89.3 |
| 8 |  Novosibirsk State University 📍 Novosibirsk, Russia | 88.6 |
| 9 |  Tomsk State University 📍 Tomsk, Russia | 88.1 |
| 10 |  Moscow Institute of Physics and Technology (MIP...) 📍 Dolgoprudny, Russia | 87.9 |



Thank you

Please feel free to ask your questions
or just submit your query at
<https://support.qs.com>

The QS logo consists of the letters 'Q' and 'S' in a white, sans-serif font, positioned inside a white square that is set against a larger orange square background.